



The WiTricity MR/1™

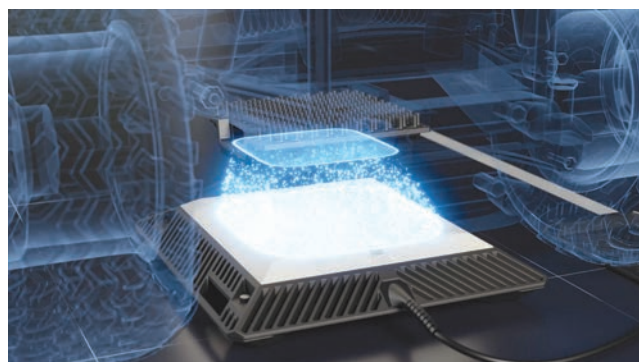
Wireless Charging System



Meet the WiTricity MR/1™ Wireless Charging System

Say goodbye to cables, plugs, and "did I remember to charge?" worries. Just park your cart over the Power Hub and it charges automatically. No cords to handle. No connectors to break. No hassle.

Perfect for home use, golf cart communities, vacation properties, and anywhere carts are used every day, the MR/1 makes owning and using your cart easier and more reliable.



How It Works

Power Hub:

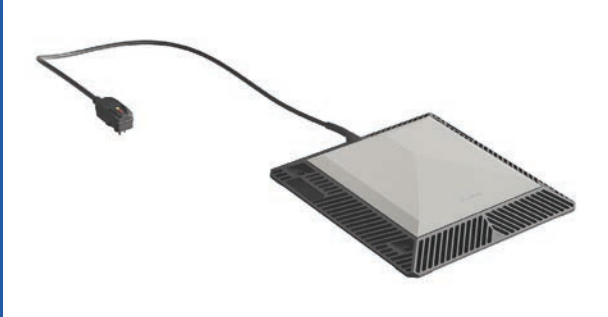
Sits on the ground and plugs into a standard outlet.

Receiver:

Installs on your cart.

Park over the Power Hub and the system starts safely charging on its own and automatically stops when the battery is charged or when you drive away.

Drive. Park. Charge



Power Hub

The Power Hub plugs into a standard wall outlet, or hardwired on a dedicated 15A circuit. Remains in standby mode until a cart enabled for wireless charging is parked above it.



Receiver

The Receiver installs under the cart in less than 30 minutes. It has connections to the battery and allows the WiTricity system to charge the battery wirelessly when positioned above the Power Hub.

Never Plug In Again

- Just park and charge — truly effortless.
- No cables to tangle, trip over, or forget to plug in.
- Works indoors or outdoors.
- Safe to use even when wet or muddy.
- Durable construction, withstands extremes of outdoor conditions (3-year warranty).
- Easy to install — plugs into a standard household outlet.
- Meets or exceeds rigorous safety and regulatory standards.
- Charges at the same speed or faster than equivalent plug-in chargers.
- No user maintenance required — just set up and forget it.
- Works with a wide range of batteries (Lithium Ion and Lead Acid).
- Multiple Receivers can use the same Power Hub.
- Still permits plug-in charging when no Power Hub is available.



Accessories

Wheel guide & alignment strip: ensures driver parks the cart in a good position for wireless charging.

Risers: used to increase the height of the Power Hub when using with a lifted vehicle.

Activity sensor: used to confirm system operation.